



## **ADMINISTRATIVE INFORMATION**

*Additional information is available on the OSAA website, [www.osaa.org/activities/che](http://www.osaa.org/activities/che)*

1. **EMERGENCY PLAN:** In the event of an emergency, natural disaster, fire, war, etc. that forces postponement or cancellation of an OSAA State Championship event, information will be posted to the home page of the OSAA website ([www.osaa.org](http://www.osaa.org)) and distributed to statewide media outlets.

2. **OSAA LIVE MOBILE APP:** [www.osaa.org/app](http://www.osaa.org/app)



The OSAA Live mobile app allows you to:

- Access OSAA Championship game day information – purchase tickets, shop official merchandise, and access championship programs.
- Follow your favorite teams
- Get updated schedules, scores, and rankings

Download the OSAA Live mobile app using the QR code above or find it in the App Store or in Google Play by searching for “OSAA Live”.

3. **ADMISSION:**

- A. **Ticket Prices per SESSION** –                      Adults – \$12                      Students – \$6
- B. Student is any child aged 5 & up through a senior in high school.
- C. Ticket good for one session only. Re-entry is not permitted. Venue will be cleared between Sessions.
- D. Pre-purchase digital tickets through [HomeTown Ticketing on the OSAA website, www.osaa.org/shop/tickets](http://www.osaa.org/shop/tickets), through the [OSAA Live Mobile App, or www.osaa.org/app](http://www.osaa.org/app). **NO ADDITIONAL FEES!**
- E. Gates open:                      Friday Evening Session (6A/5A COED Game Day, 4A/3A/2A/1A COED Game Day) – 5:15 P  
    Saturday Morning Session (5A Traditional, 4A/3A/2A/1A COED, 6A Large Traditional) – 8:15 AM  
    Saturday Afternoon Session (6A Small Traditional, 4A Traditional) – 1:00 PM  
    Saturday Evening Session (6A/5A COED, 3A/2A/1A Traditional) – 6:00 PM
- F. **Bus Drivers:** Schools are responsible for all bus driver admissions. The OSAA does not provide passes for bus drivers.
- G. **Passes:** ONLY the OSAA Gold Card, OSAA VIP pass, OSAA Media pass, and Cheer Media pass which will admit the bearer only with photo ID, are to be honored at any OSAA State Championship event. No school, athletic district, officials’ association, etc., passes are to be accepted.

4. **EXPENSES:** [www.osaa.org/docs/forms/ReimbursementFormula.pdf](http://www.osaa.org/docs/forms/ReimbursementFormula.pdf)

Team expenses will be paid by check at the conclusion of the winter sports season according to the 2023-24 Reimbursement Formula.

5. **LODGING AND VISITOR INFORMATION:** Schools are to make their own arrangements for lodging.

- A. **Headquarter Hotel – Monarch Hotel - Clackamas:** <https://monarchhotel.cc/>
- B. The Monarch Hotel - Clackamas is the OSAA Headquarter Hotel for Oregon City events. Call 503-652-1515 for rate information. Remember to mention that you are an OSAA member school.
- C. **Visitor Information:** [www.orcity.org/community/visitor-information](http://www.orcity.org/community/visitor-information)

Visit City of Oregon City online or call them at 503.657.0891 for more information about dining, shopping, lodging, historical landmarks and more.

## **COACH / TEAM INFORMATION**

Additional information is available on the OSAA website, [www.osaa.org/activities/che](http://www.osaa.org/activities/che)

1. **CHEERLEADING RULES:** [www.osaa.org/docs/handbooks/chehandbook.pdf](http://www.osaa.org/docs/handbooks/chehandbook.pdf)
2. **ALTERNATES** (*Cheerleading Handbook, Eligibility*): Each squad may bring two alternates to the Cheerleading State Championships in addition to the maximum number of participants allowed by the division constraints. Alternates must be listed on the Registration Form and shall satisfy the same eligibility requirements as other Cheerleading State Championships participants, except that alternates may be members of the junior varsity or freshman squads.
3. **COACHES CERTIFICATION** (*Cheerleading Handbook, Eligibility*): Coaches must meet all OSAA Certification requirements, including the yearly OSAA Spirit Safety Clinic in order for their teams to be eligible. See OSAA Handbook, **Executive Board Policies, "Certification – Athletic Directors and Coaches"** for more information.
4. **DIVISIONS** (*Cheerleading Handbook, State Championship Registration*): The divisions at the Cheerleading State Championships shall include varsity level squads based upon school classification and squad gender as indicated below. NOTE: Squads with one or more male squad members shall participate in a Coeducational Traditional or Game Day Division. Once Divisions have been established, changes will not be permitted.

<u>Division</u>	<u>Squad Size</u>	<u>Squad Gender</u>	<u>Minimum Division Entry</u>
3A/2A/1A – Small – Traditional	15 or fewer	Females	5
3A/2A/1A – Large – Traditional	16 – 30	Females	5
4A – Small – Traditional	15 or fewer	Females	5
4A – Large – Traditional	16 – 30	Females	5
5A – Small – Traditional	15 or fewer	Females	5
5A – Large – Traditional	16 – 30	Females	5
6A – Small – Traditional	15 or fewer	Females	5
6A – Large – Traditional	16 – 30	Females	5
4A/3A/2A/1A Coed - Traditional	30 or fewer	Coeducational	5
6A/5A – Coed – Traditional	30 or fewer	Coeducational	5
4A/3A/2A/1A – Game Day	30 or fewer	Coeducational	5
6A/5A – Game Day	30 or fewer	Coeducational	5

5. **MINIMUM DIVISION ENTRY** (*Cheerleading Handbook, State Championship Registration*): If fewer than the designated number of entries registers to compete in any given division, the division shall be combined within division type (traditional, coed, or game day) or classification. Example: if three teams register for 5A Small and nine teams register for 5A Large, both divisions would collapse and become the 5A division with small and large teams combined. Game day divisions will not be combined with traditional divisions.
6. **CANCELLATIONS:** If, for whatever reason (illness, injury, etc.), you must drop your squad from competition, please notify Kelly Foster, 503.682.6722 x233 at the OSAA immediately.
7. **STUNTS:** If you have questions regarding the legality of a stunt, please contact the State Rules Interpreter Haley Thomas [cheerleading.sri@osaa.org](mailto:cheerleading.sri@osaa.org) or 503.887.9197
8. **PROPS** (*Cheerleading Handbook, Performance Requirements*): Pom-poms, megaphones, hand-held signs and flags or the equivalent are the only acceptable props.
9. **MUSIC** (*Cheerleading Handbook, State Championship Rules and Procedures, Performance Procedures, Music*): All teams must provide their own MP3 device or smart phone for use on the event provided sound system. Music must be recorded at the correct tempo. No cover may be on any MP3 player or smart phone so that an auxiliary cord may be easily inserted into the device. Please ensure that jacks are clean and free of any debris which may impact connectivity. You must ensure that your device has a jack into which an auxiliary cord may be inserted. Note that you may need to acquire an adapter in advance if your player does not have a headphone or iPhone jack. One or several selections of music may be used as long as they follow the music licensing rules.

Please keep your routine music in your possession until you are called to enter the performance floor. You will hand carry your music to the sound table.

Advisors/Coaches/Directors are asked to remain at the sound table while their squad performs and to take their music with them at the conclusion of the performance. Representatives will be asked to press “play” and “stop” for their routines.

There will be no sound checks permitted on the main sound system.

Competition music must be properly licensed, and a team must be able to provide proof of licensing (upon request).

**10. ADDITIONAL REMINDERS:**

- A. Remember that “special effects” must be recorded in stereo in order to be broadcast by the equipment. Contact Kelly Foster if you have any questions about this requirement.
- B. As a precaution, it is strongly recommended that in addition to a cell phone, a backup version be available in case of audio difficulties.
- C. Although not specified in the rules, judges have recommended that music be used to support less than half of the total performance. Coaches are also reminded to make sure that the lyrics of the music used are appropriate for a public high school performance.

**11. DEPARTURE PACKETS:** Departure Packets will be located at the OSAA Event Office. Packets will include Score Sheets.

**12. CHAMPIONSHIP SCHEDULE:** [Championship Schedule](#)

This schedule contains the performance order, team photo schedule, check-in time, practice schedule and performance time.

**A. Registration and Passes:**

- 1) Coaches should enter with their teams through the Main Entrance on Beaver Creek Road.
- 2) At registration each school will receive:
  - a) Passes for each coach and participant (including alternates) listed on the Official Registration Form. The passes must be worn by coaches and students at all times (except during performances).
  - b) Participant and coach passes will gain admittance for the entire event.
  - c) Persons without passes will be required to purchase tickets to the competition.

**B. Performance Order: **IMPORTANT**** Please reconfirm your performance order on the OSAA website prior to the contest. Any revisions in performance order due to drops, etc., received by noon on Wednesday, February 8, will be posted by 4pm Wednesday.

**C. Team Photos:** The photographer will be located in the main entrance of Oregon City High School, near the team registration. Teams will be assigned an official picture time prior to their scheduled practice time. Please be sure to review the Team Picture Schedule for your scheduled time. Winning teams may also have pictures taken after the competition if they wish.

**D. Safety Judging and Inspection:**

- 1) Safety judges will not be evaluating performances during practice times. They will be available to answer any questions that coaches may have.
- 2) Jewelry and nails will be inspected at the check-in prior to warmups, and any found to be in violation of the rules will have to be modified prior to the performance, or a violation will be assessed. Coaches are reminded of the NFHS rule statement, “Loose, baggy clothes, nylon hose/tights are not appropriate for stunting squads.”
- 3) If you have any questions about the legality of a particular stunt or about appropriate apparel, please contact the Head Technical Judge and OSAA State Rules Interpreter, Haley Thomas, 503.887.9197 or [cheerleading.sri@osaa.org](mailto:cheerleading.sri@osaa.org).

**E. Practice Schedule:**

- 1) Practice / Warm Up will take place in the Wrestling Room and Auxiliary Gym approximately 30 minutes prior to your anticipated performance time. Practice 1 will be in the Wrestling Room; this space may be used for stretching, tumbling, and stunt warmup. No music will be allowed in this room. From there teams will move on to the Auxiliary Gym for Practice 2 where there will be a full performance floor available (9 panels). Teams will have 5 minutes and be able to play their music. Safety judges will be stationed at Practice 2 for any questions but are not there to critique. You are not required to use your assigned practice time, but no other scheduled practice time will be allowed for your squad.
- 2) Practice on the performance surface in the gym is not allowed.

- 3) Stunting is only allowed in the designated warmup areas. Your team will be assessed a 10- point penalty if you practice stunts outside of those designated areas.

**13. TEAM ENTRANCE ONTO THE PERFORMANCE FLOOR:** In an effort to expedite the teams entering and exiting the performance floor, here are a few guidelines we are asking teams to follow:

- A. After teams are checked at the "On Deck" area, and as soon as the previous team exits the performance mat, the next team will move forward to await their name to be called by the announcer.
- B. Teams who wish to do a unity cheer should do so at this time. As soon as the team name is announced, they should "spirit" quickly onto the performance mat and take their starting positions; this would be preferable to marching onto the mat slowly.
- C. When their routine is completed, the team may again exhibit their enthusiasm and spirit as they exit the performance floor.
- D. A team's entrance and exit from the arena floor are not part of the scored performance.

**14. JUDGES PANEL:** Two panels of judges will be used with continuous performances alternating before the two panels. There will be no pauses between performances unless a judging panel has back-to-back performances. Squads will need to be ready to go immediately when introduced.

**15. COACH AND PARTICIPANT SEATING:** Coaches and participants may sit on the floor in front of the performance surface in designated areas. There is also additional seating in the auditorium. Spectator seating will be reserved for spectators only.

**16. RULE 3 – CONTESTS – SPORTSMANSHIP – CROWD CONTROL** (*OSAA Handbook, Rules*)

**17. STATE CHAMPIONSHIPS – BROADCASTING/STREAMING** (*OSAA Handbook, Executive Board Policies*) ([OSAA for Media](#)) (*Revised July 2019*)

- A. The OSAA owns the broadcasting / streaming rights to all state championship events, first round contests through the championship finals. Radio and television stations, cable companies, websites and social media accounts planning to broadcast / stream games in any round of the OSAA state championships must register with the OSAA by submitting an online Registration Form. Registered and approved broadcasts / streams will be listed on the OSAA State Championships Broadcast Schedule. Those not listed will not be allowed.
- B. For OSAA state championship events hosted by member schools, it shall be the responsibility of those registered and approved to contact the host school's athletic director to arrange for space, power and Internet access if available. The OSAA will coordinate these arrangements at all final sites and semifinal sites for football only.
- C. The NFHS Network is the exclusive video broadcast rights holder of the OSAA state championship events. Live and on-demand video of OSAA state championship events (full or condensed versions) is strictly prohibited and in direct violation of the OSAA's agreement with the NFHS Network. Those registered and approved for broadcasting / streaming state championship events declined by the NFHS Network shall pay a rights fee to the OSAA.
- D. Video highlights are limited to a total of two minutes per game, including broadcasts, streams and social media posts.

**18. STATE CHAMPIONSHIPS – VIDEOTAPING** (*OSAA Handbook, Executive Board Policies*) ([OSAA for Media](#)) (*Revised July 2019*)

- A. Recording video of OSAA state championships from seating areas is allowed provided the view of spectators is not obstructed. Use of a tripod in seating areas is prohibited due to safety reasons. An official school video recorder, identified prior to an OSAA state championship event by the head coach or athletic director of a participating school, will be allowed in a designated area established by the OSAA.
- B. Recording video is for private use only. Broadcasting or streaming video, live or delay, is prohibited unless an online Registration Form has been submitted and approved by the OSAA. Those approved for broadcasting / streaming OSAA state championship events declined by the NFHS Network shall pay a rights fee to the OSAA.

**19. STATE CHAMPIONSHIPS – MEDICAL CHAIN OF COMMAND** (*OSAA Handbook, Executive Board Policies*) (*Effective Fall 2012*): The OSAA provides an official medical team that consists of State of Oregon registered athletic trainers and/or licensed physicians at state championship events administered by OSAA staff whenever possible. If provided, this OSAA designated medical team shall have final authority on all injury evaluations, participation status and return-to-play decisions.

**20. ATHLETIC TRAINER:** The OSAA will provide a certified trainer to respond in case of injuries at the contest. The trainer will be available to respond to emergencies; however, teams may wish to provide their own trainer if they anticipate the need for precautionary taping, etc.

**21. SERVICE ANIMALS:** Trained guide dogs and service animals assisting guests are welcome at OSAA State Championships. All other animals are prohibited. All service animals must remain on a leash or in a harness, and be in full control of the handler, at all

times. Handlers are responsible for any damage or injuries caused by their animals, must properly dispose of waste in appropriate containers and must take appropriate precautions to prevent property damage or injury.

**22. LOST AND FOUND:** If you lose something during the event, stop by the Athletic Office (OSAA Event Office) to see if your item has been turned in. After the event contact the Oregon City HS Athletic Office, 503.785.8739, for your items.

**23. AWARDS:** Trophies and medals will be presented at the conclusion of each session (refer to performance schedule).

A. **Trophies:** Trophies will be presented to 50% of the teams in a division up to a maximum of five in each division.

B. **Medals:** Individual medals will be presented to both the champion and second place teams in each division.

**24. STATE CHAMPIONSHIP RESULTS:** [www.osaa.org/activities/che](http://www.osaa.org/activities/che)

The judges' scores will be computer tabulated. The computer summary sheet for all teams as well as the team specific score sheets from each judge will be included in the packets available to coaches at the competition headquarters ("Press Room") immediately following each awards ceremony. The computer summary of all teams' scores will also be posted on the OSAA website Saturday evening.

Please direct your questions or comments regarding judges, schedule, coaches or other pertinent information as it relates to the championship, to Kelly Foster at the OSAA (503.682.6722 x233 or 1.888.838.6722 x233 TOLL FREE; Cell – 503.318.1672 or email: [kellyf@osaa.org](mailto:kellyf@osaa.org)).

## **SOUVENIR INFORMATION**

*Additional information available on the OSAA website, [www.osaa.org/shop](http://www.osaa.org/shop)*

**1. STATE CHAMPIONSHIPS MERCHANDISE:** [www.osaastore.com](http://www.osaastore.com)

A. **Pre-Order:** [osaa.rushteamapparel.com/osaa/pre-orders/](http://osaa.rushteamapparel.com/osaa/pre-orders/)

RushTeamApparel, exclusive merchandise partner of the OSAA, offers pre-orders. The pre-order window is currently open and will close Tuesday, February 6<sup>th</sup> at 11:59pm. Select garments are available for pre-order: sweatshirts, t-shirts, long sleeve t-shirts, sweatpants, patches, pins, beanies and various Nike products. Merchandise will be available for pick up at the RushTeamApparel booth throughout the event.

B. **Championship Site:** RushTeamApparel will be onsite at the OSAA state championship with a wide variety of souvenir merchandise. Stop by the merchandise booth to purchase t-shirts, sweatshirts, letterman patches, sweatpants, hats and much more. RushTeamApparel also offers a wide variety of customization options including school name, student-athlete name, event decals and more!

C. **Official Letterman Patches:** Get your official OSAA State Championship letterman patch onsite or by ordering online. Forget to get one last year? You can order an official letterman patch for any year going back to 2014-2015 in any OSAA activity by ordering online.

D. **RushTeamApparel Contact Information:** RushTeamApparel is the exclusive merchandise partner of the OSAA. For more information, contact RushTeamApparel at 1.253.858.5288 or via email at [orders@rushteamapparel.com](mailto:orders@rushteamapparel.com).

**2. NORTHWEST SPORTS PHOTOGRAPHY (NSP):** [www.4nsp.com](http://www.4nsp.com)

A. **Action and Awards Photos:** NSP will shoot action photos during all performances. Photos will also be taken during the awards ceremonies during each session. Team pictures with awards may be taken at the Photo Area following the awards ceremony. All action and award photos will be available online for purchase the Sunday following the event. NOTE: Photos will not be sold onsite.

B. **Team Photos:** NSP will have a photographer available to shoot team photos. The photographer will be located in the main entrance of Oregon City High School, near the team registration. Order forms will be sent to your school a week or so before State. Please distribute the order envelopes to your team a few days before the competition. Individual and/or buddy pictures may also be taken at the time of the Team Photos. Team photos will be available online for purchase the Sunday following the event.

C. **NSP Contact Information:** NSP is the official photographer of the OSAA. For more information, contact NSP at 800.446.5758 or via email at [customerservice@4nsp.com](mailto:customerservice@4nsp.com).

**3. NFHS NETWORK:** [www.nfhsnetwork.com/associations/osaa](http://www.nfhsnetwork.com/associations/osaa)

The NFHS Network will stream LIVE video of all performances. Viewers pay a monthly fee or an annual pass. Due to music license restrictions, performances are not available for on demand viewing or digital download.

4. **OSAA DIGITAL CHAMPIONSHIP PROGRAMS:** <http://www.osaa.org/programs> *Programs available online only.*



The Official Cheerleading State Championship program includes team photos, historical state championship records and a color map of all OSAA member schools.

Programs are available on the OSAA Live mobile app and online. Download the *OSAA Live* mobile app from the App Store or Google Play by searching for “OSAA Live”.

5. **MINI REPLICA TROPHIES:** [www.osaa.org/shop#trophies](http://www.osaa.org/shop#trophies)

- A. **Mini Replica Trophies:** The OSAA is proud to be able to offer mini replicas of the trophies presented at the OSAA State Championships. Mini replica trophies are 8” tall x 10” wide x 5” deep and make a great gift for coaches, students, parents, etc. Mini replicas can be produced for teams and individuals for any year in any OSAA activity. Each mini replica trophy is \$70 and that includes a personalized nameplate, shipping & handling. Order mini replica trophies online.
- B. **Crown Trophy Contact Information:** Crown Trophy manages the mini replica trophy program. For more information, contact Crown Trophy at 503.626.1125 or via email at [rian@crowntrophy41.com](mailto:rian@crowntrophy41.com).



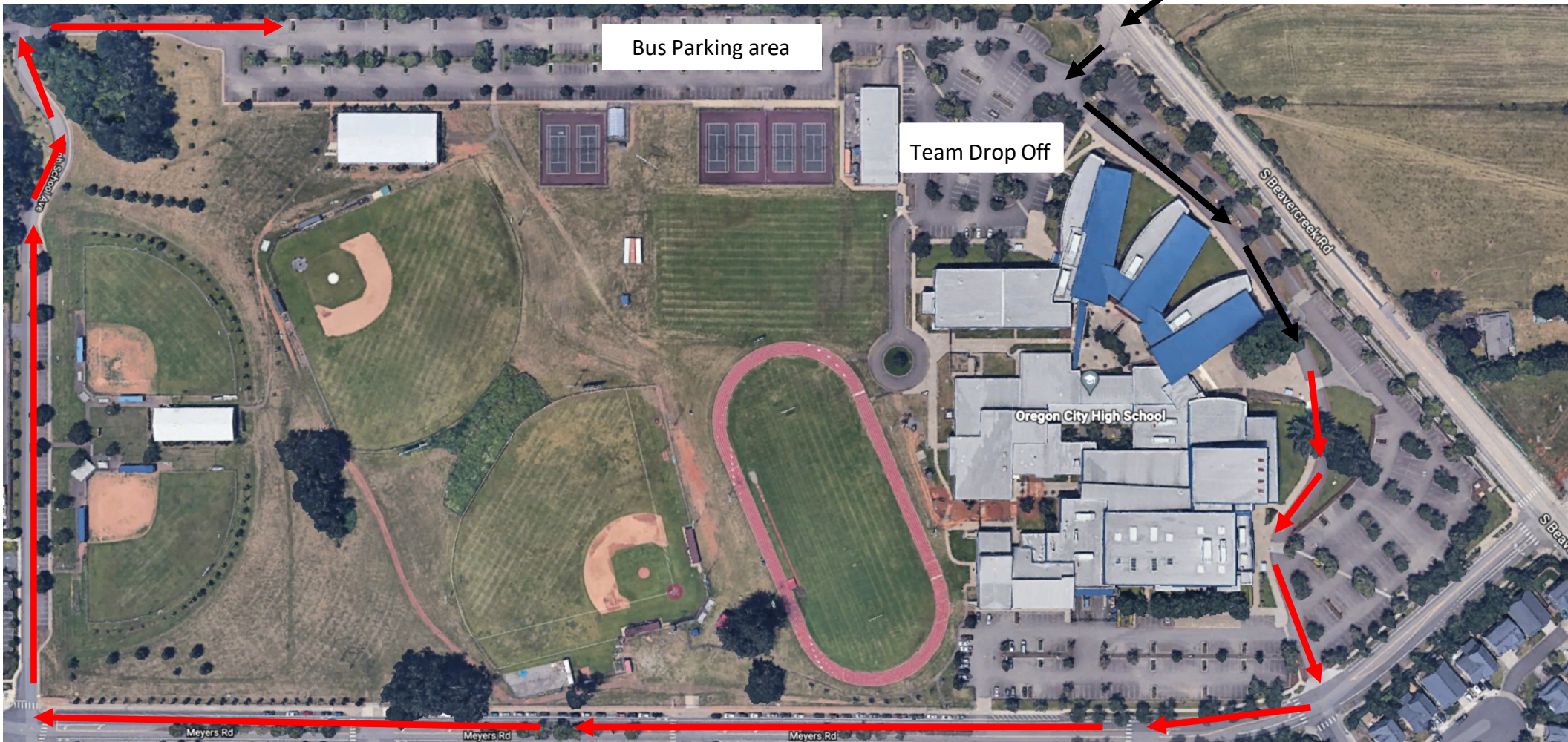
# Oregon City High School Entrance Information





# Oregon City/OSAA State Cheer Parking Map

School Entrance of  
S. Beaver Creek Rd.





**OREGON CITY HIGH SCHOOL**  
 19761 S. BEAVERCREEK  
 OREGON CITY, OREGON 97045

**Team Entrance**  
 Team Registration  
 Team Photos by NSP

**Spectator Entrance**  
 Ticket Scanners

**TEAM AREA**  
**JUDGES ROOM**

**Quality Control**

**AUDITORIUM**

**OSAA OPERATIONS CENTER**

**UPPER GYM**

**STAGE-JUDGES**  
**"A" BLEACHERS**  
**MAIN GYM PERFORMANCE AREA**  
**"B" BLEACHERS**  
**"C" BLEACHERS**

**WARM UP GYM**  
**Practice 1**  
**Practice 2**

**TEAM ENTRANCE INTO PERFORMANCE AREA**

**ute to warm-up area**

Spectator Entrance  
Ticket Scanners

Route to warm-up area

Quality  
Control

TEAM AREA

JUDGES ROOM

AUDITORIUM

OSAA OPERATIONS  
CENTER

## UPPER GYM

## Practice 1

## WARM UP GYM

## Practice 2

## STAGE-JUDGES

MAIN GYM  
PERFORMANCE  
AREA

TEAM ENTRANCE  
INTO PERFORMANCE  
AREA